



PCN

Point de Contact National
Luxembourgeois

From disruption to resilience...

Responsible Business Conduct in International Supply Chains

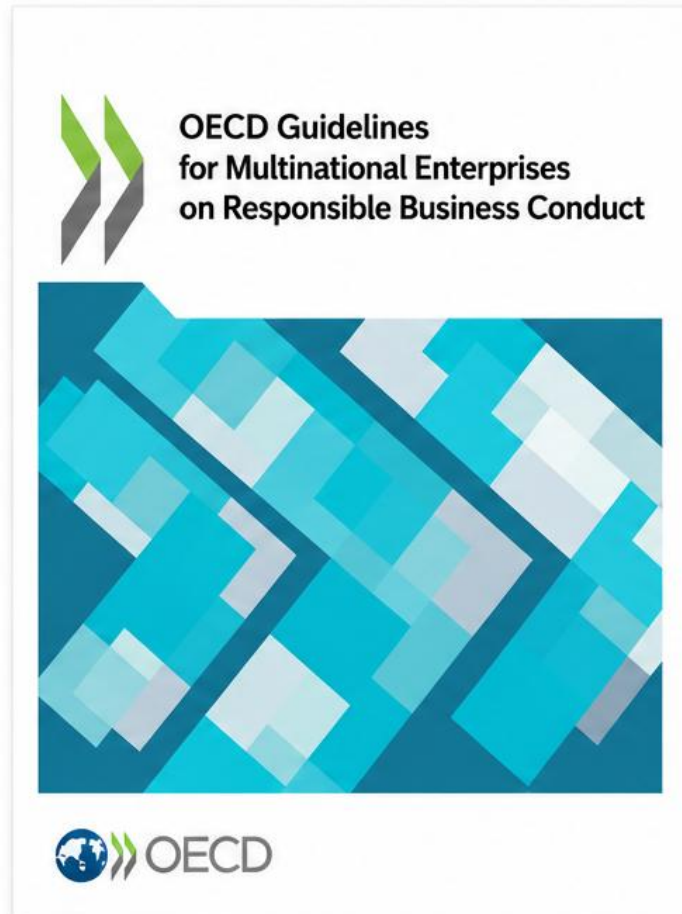
OECD Guidelines • Due Diligence Guidance • Luxembourg National Contact Point

BAŞAK BAĞLAYAN

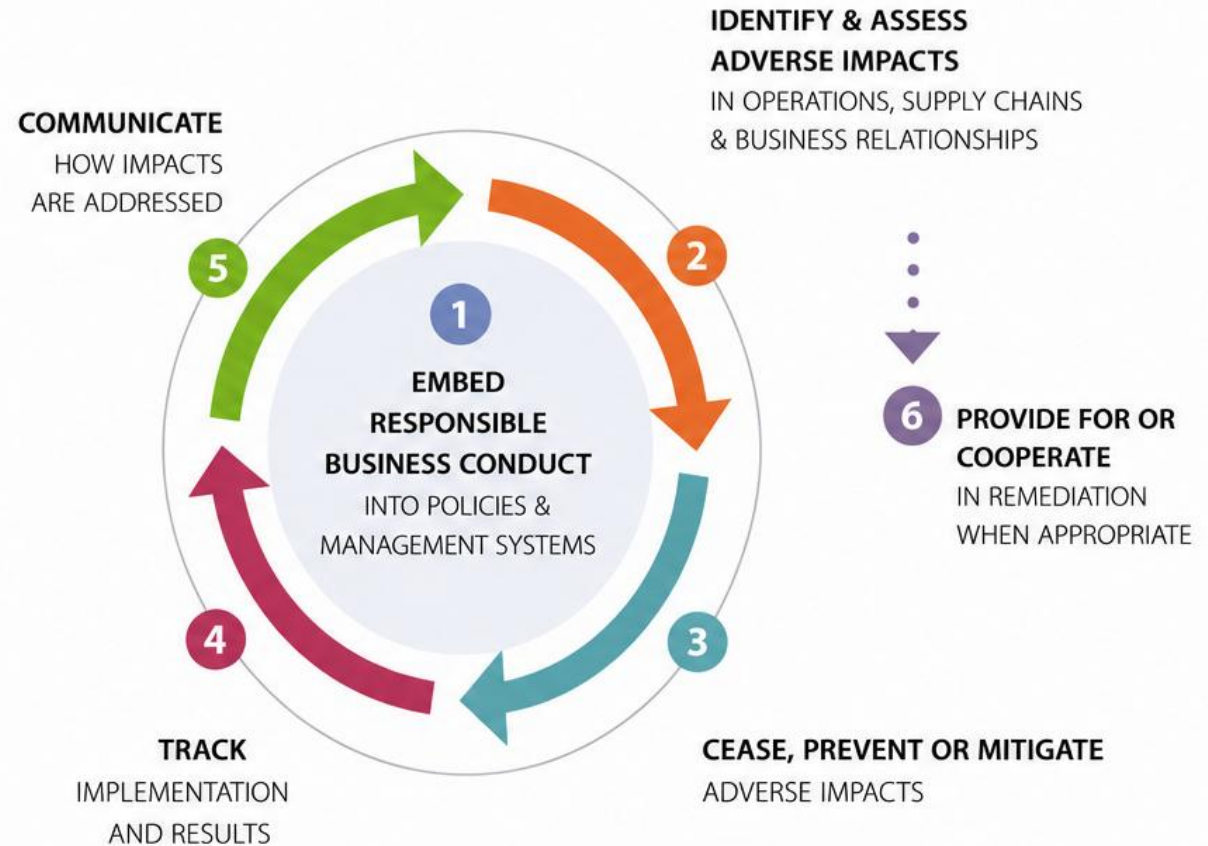
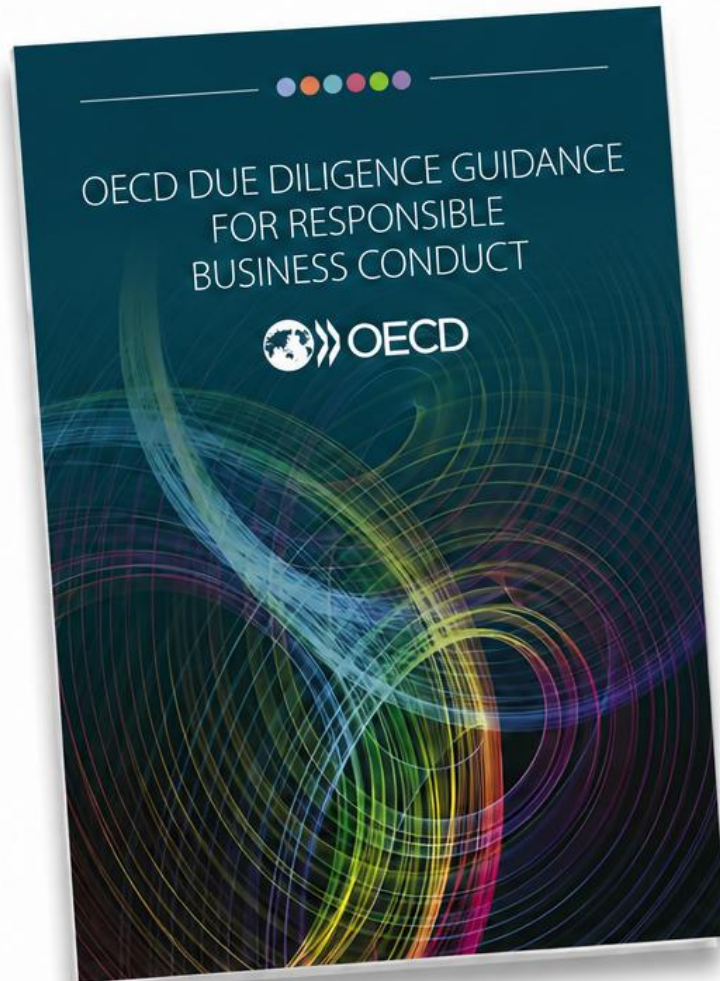
11 May 2026

OECD Guidelines:

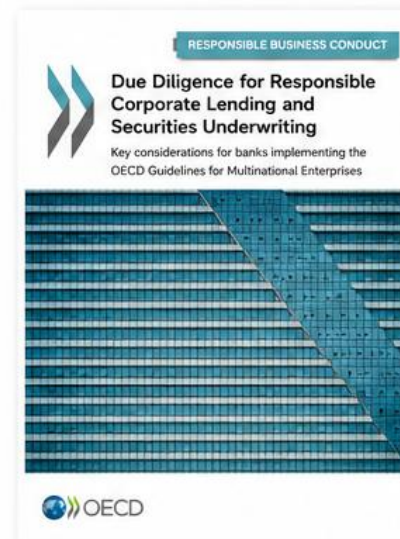
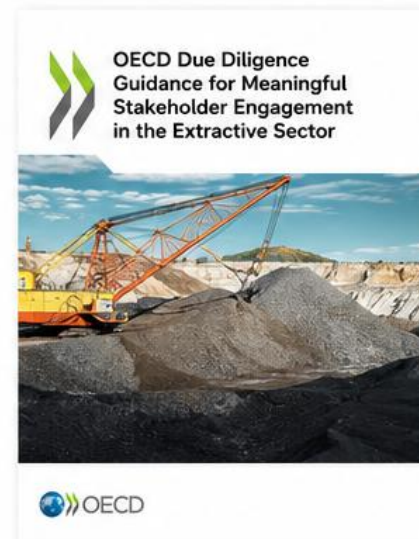
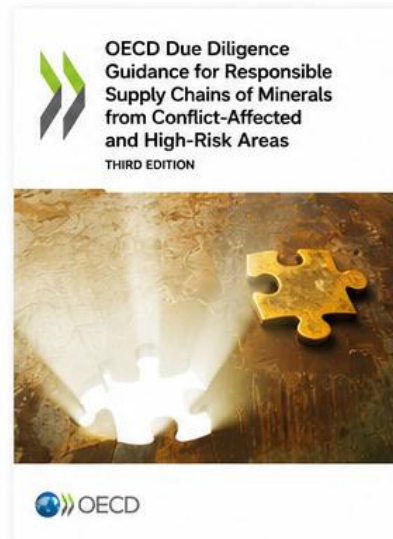
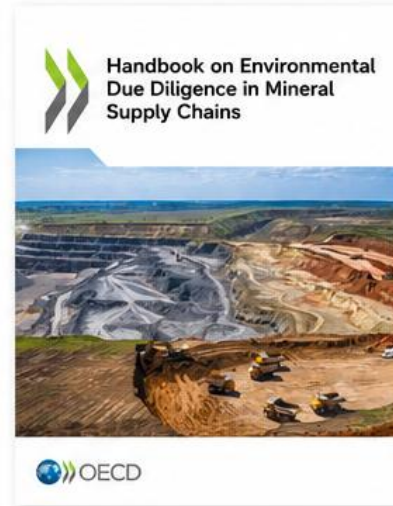
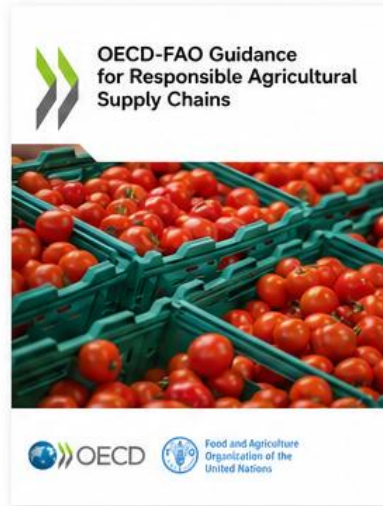
A shared international reference for RBC



Due diligence: the OECD risk-based approach



OECD Due Diligence Guidance: Sector-Specific Tools

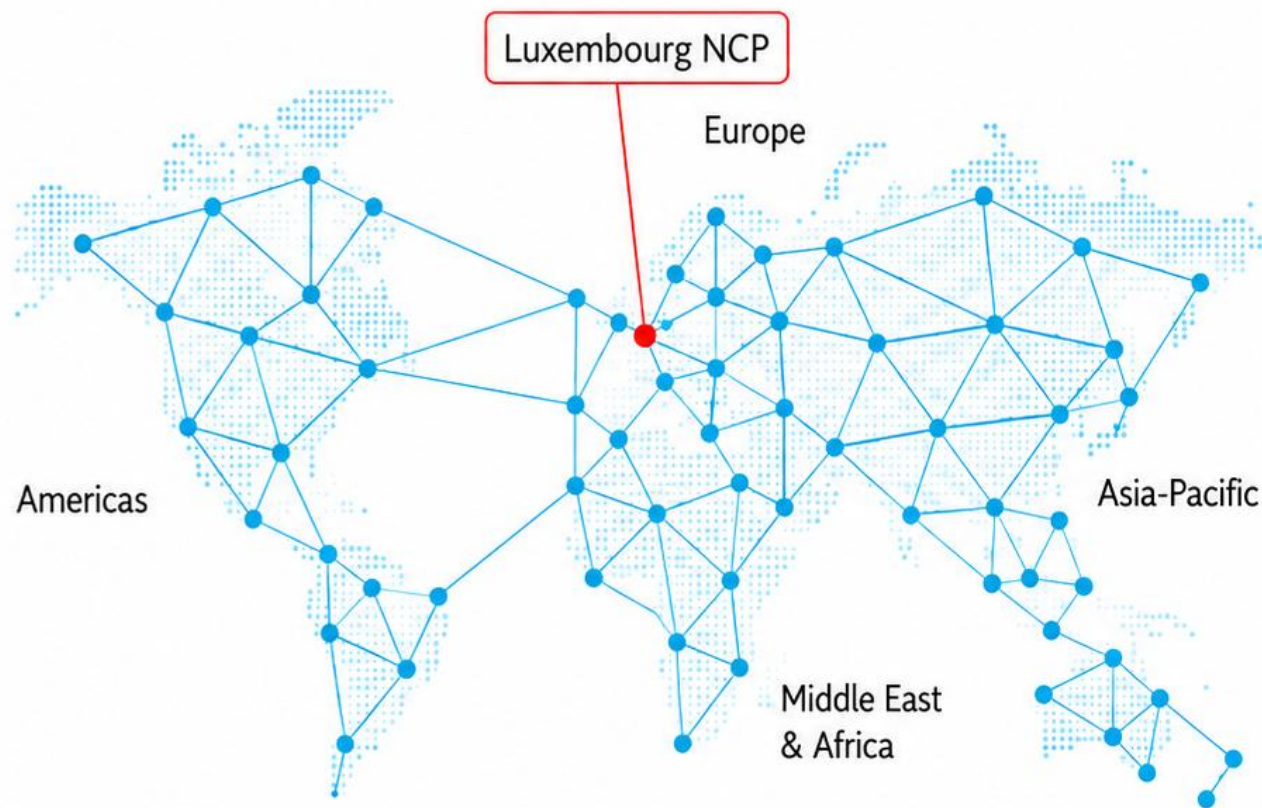


National Contact Points:

the implementation mechanism of the OECD Guidelines

Mandate

- Promote awareness and uptake of the Guidelines, including by responding to enquiries
- Contribute to the resolution of issues that arise in relation to implementation of the Guidelines
- Where appropriate, support government efforts to foster policy coherence on responsible business conduct



LuxNCP is one among 52 within the global OECD NCP network.

Engage with the LuxNCP

When to reach out

- Questions about the OECD Guidelines or the Due Diligence Guidance
- Understanding how the framework applies to your sector or activities
- A concern or complaint that may fall under the NCP procedure

How to reach us



Email: pcn@eco.etat.lu

Website: <https://pcn.gouvernement.lu/en.html>

Ministry of the Economy, Luxembourg

Thank you for your attention.
